

SUSTAINABILITY

Spreading biscuit magic, sustainably

At Biscuiteers, we love being there for those milestone moments, but we know that even our beautifully hand-iced biscuits have an impact on our planet. That's why we're taking steps to reduce our carbon footprint, and commit to a greener future.

Read on to see what we've achieved so far, as well as some big ambitions for the future...



0

we have eliminated the use
of paper and ink in production
by introducing digital
icing specifications

20

minutes icing drying time saved
with our new drying tunnel

4

kW of energy saved by introducing
our new drying tunnel



Our packaging

We're really proud to say that all our letterbox biscuit boxes and delivery boxes are fully recyclable.

All the individually packaged biscuits that we sell in our London boutiques are now wrapped in a biodegradable cellophane – a change we've implemented in the last 12 months to minimise our use of single use plastics.

Our lovely catalogues are manufactured in accordance with ISO certified standards for environmental, quality and energy management. We're proud to work with a supplier who has carbon offset the paper we use through the World Land Trust. The paper also comes from FSC certified sources, and what's more, we only print using environmentally-friendly vegetable or soya based inks.



What's next?

At the moment, the glassine pads we use to protect our biscuit designs have a plastic coating to ensure that they're food safe. To dispose of these sustainably, the outer layers need to be separated – but we're going one step further and are currently working on a food safe, fully recyclable alternative.

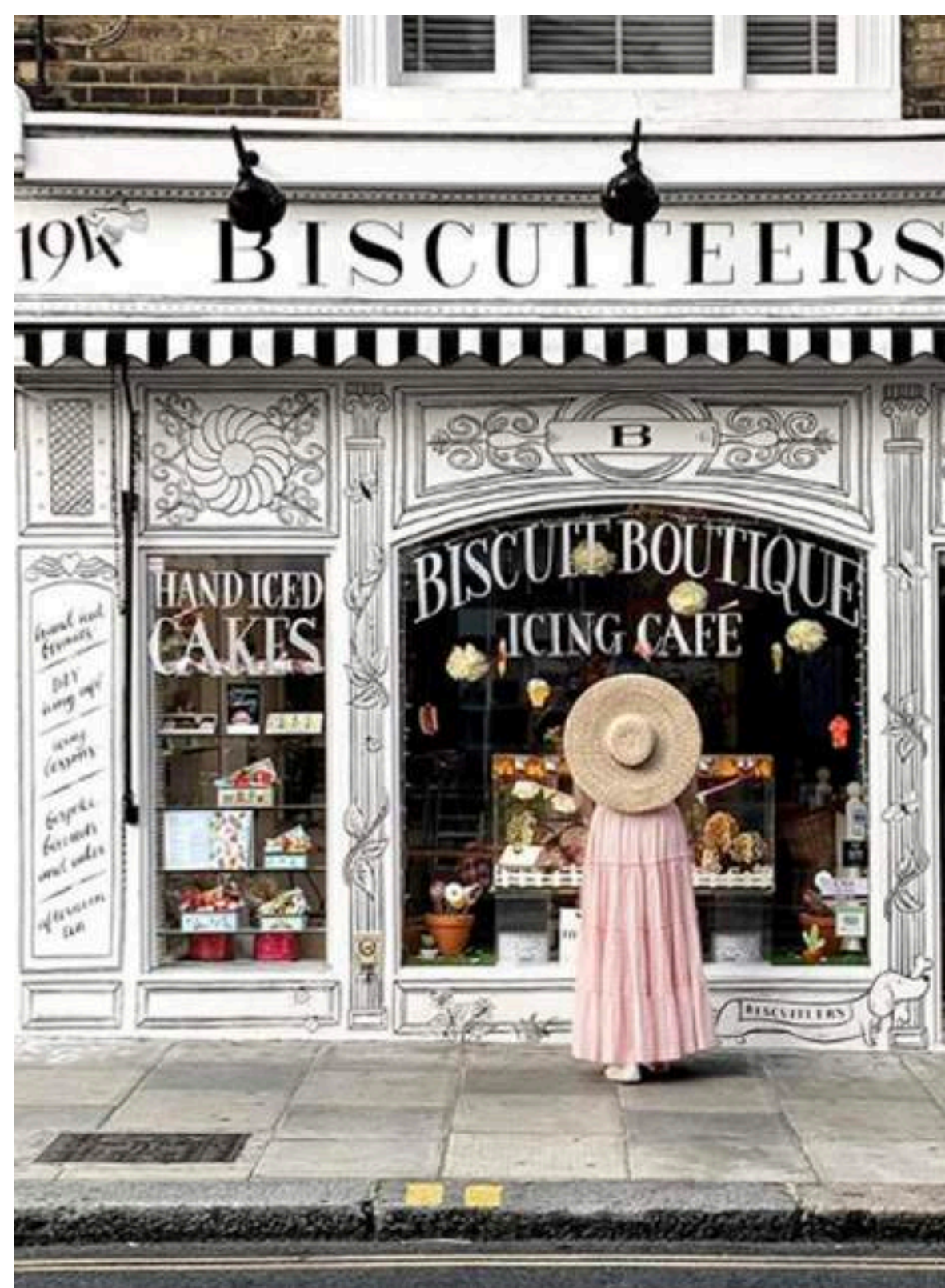
We'll also be adding recycling instructions to all our packaging over the next year to make it really easy for you to help from home.

Greener biscuit deliveries

Our Letterbox biscuits a firm favourite with customers, and they are also a greener way to gift; being able to fit through the letterbox means that you don't have to be home to receive them, so multiple deliveries attempts aren't necessary.

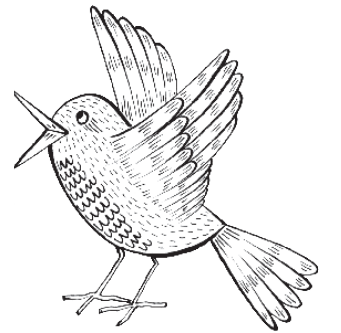
This is something that's remained really important to us, even as we've expanded our range. We're proud to have developed our own collection of letterbox friendly cocktails and tea to accompany our letterbox biscuits, and have also created letterbox friendly hamper boxes to deliver them in.

We've also thought about our own delivery methods too. For all London based deliveries, we've partnered with Green Courier, the UK's leading environmentally-friendly courier. We've also switched to using an electric van for deliveries between the Ministry of Biscuits and our two London boutiques.



Our partners

We're a member of Walpole, the official sector body uniting 250 of the UK's finest luxury brands, and we're also part of the GREAT Britain and Northern Ireland campaign, which champions the very best of the UK's rich heritage and creativity. Working with British partner brands and keeping our sourcing local and artisan where possible is a key part of our commitment to sustainable practices. We're proud to work with Sipsmith, Tregothnan, Godminster and Gusbourne, not to mention Wimbledon Beer which is just around the corner from the Ministry of Biscuits.



What's next?

We recognise that there's still work to be done in this area. That's why we've hired some expert help into business in the last year, including a Continuous Improvement Manager and a Sustainability Specialist. Both of these new additions to the Biscuiteers team will be instrumental in helping us to drive improvement and build our knowledge in this area. We're also in the process of building a robust ingredients and packaging tracker, encouraging British and local sourcing.

Greener practices at the Ministry

We moved to the Ministry of Biscuits in 2019. As well as a lovely new home to unite all areas of the business, it has also been an opportunity to streamline our production, bringing everything under one roof and improving efficiencies.

We've made sure we're only use LED lighting in the building, which uses less electricity for the same output. We've also set up motion sensors in our production areas to manage energy use and ensure we only have lights on when needed.

The AA rating is a key factor for us when purchasing new equipment, and we carry out preventative maintenance to make sure our machinery is working in the most efficient way.



What else?

Over the last year, we're pleased to have introduced some new initiatives to help us all live a little greener whilst at work. We have a fleet of bikes for staff to use for a greener commute and we've also introduced a cycle to work scheme.

Cleaning has become more important than ever before over the last year, and we've made sure that we're working with a cleaning company who only use environmentally friendly products.

And finally, we're upcycling fanatics, so a lot of our office furniture is made from recycled conveyors and bakery racks!

The Biscuiteers Garden

We've started up our very own Biscuiteers greenhouse, with a gardening committee and a 'grow your own' veg scheme, perfect for office snacks. We compost our own garden waste to reuse on the garden, and we plant to attract bees and butterflies.



What's next?'

We're working on tracking and improving the energy of our building and production methods. This will include an energy reporting system that monitors the usage of every piece of equipment so we know which areas we need to target and improve.

Our new icing tanks will allow us to optimise icing production, meaning less energy is needed from mixers to make the icing.

We'll be improving the technology we use to dry our biscuits once they've been iced too, by switching to one central biscuit dryer. We won't need to open and close the doors as much with this new piece of equipment, Our new dryer will also have a special condenser unit to reuse as much of the warm air inside it as possible.

We're committed to continuing what we've started in this area, and have plenty of plans in place for the next 12 months.

We'll be looking at improving our stationery suppliers and usage across the business to ensure we're only using what we really need.

We'll be reporting on water usage and are exploring rainwater collecting systems so we can water our garden and clean our vans.





Top tips for you at home

Reuse

You can repurpose our tins and create a beautiful succulent garden, or a place for special treats

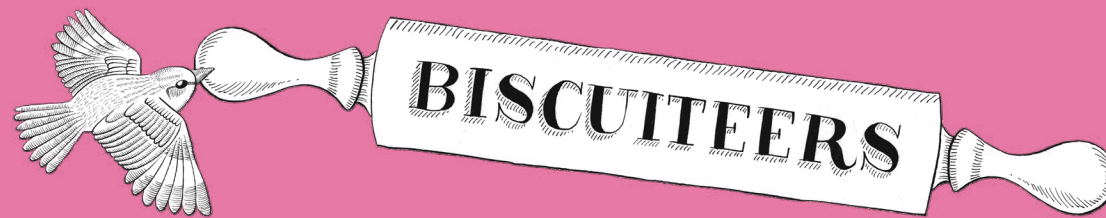
Recycle

You can pop our letterbox packaging in your card and paper bin, our tins in your aluminium bin, and any plastic from our macaron boxes in with your other plastics

Green biscuits?!

Why not order our vegan biscuits next time you shop with us? Just as delicious and kinder to our planet, win win!





biscuiteers.com